



2026
Ürün Katalođu
Product Catalog

Firma Profili

Sektörün önde gelen firmalarından birisi olan MEYSAN, 1977 yılından günümüze kadar kapı ve pencereler için kapı kolları, kapı kilitleri, kilit barelleri, piriç ve çelik menteşeleri ev ve ofis mobilyaları için aksesuarlar üreten bir kuruluştur. Üretimimizi; 5000 m² kapalı alanda, kanusunda bilgi ve deneyim sahibi uzman bir ekip tarafından, en son teknolojik gelişmelere uygun makine ve yöntemler kullanılarak gerçekleştirmekteyiz. Standartlara göre üretilen ürünlerin yanı sıra, özel müşteri şartnameleri ve isteklerine göre de üretim yapılabilmektedir. Ürünler kullanıldığı ortama uygun renk seçenekleri ile, uzun süre görünüm ve işlevlerini kaybetmeyecek şekilde dizayn edilmekte, üretimin her aşamısında ve özellikle de son kontroller sırasında modern test cihazları kullanılarak test edilip, yüksek kalitede müşteriye ulaştırılması sağlanmış olmaktadır. Sahip olduğumuz TSE belgelerimiz yapmış olduğumuz ürünlerin kalitesine olan güvenin ifadesidir.

Üretimde, dağıtımda, satış sonrası hizmette ve genel yönetim alanında sürekli yenilenen MEYSAN Türkiye'deki standartları yükseltmeye devam edecektir.

Misyonumuz

- Müşterilerimize güvenilir ve kaliteli ürünler sunmak.
- İleri teknolojilerin kullanıldığı AR-GE faaliyetlerimizle yeni ürünler geliştirmek.
- Genç yaş ortalamasına sahip donanımlı kadromuzla, Türkiye'nin yükselen hedeflerine katkıda bulunmak.

Vizyonumuz

- Teknolojik gelişmeleri izleyerek ürün kalitesini sürekli yükseltmek.
- Kalite ile özdeşleşmiş marka değerimizi, dünya çapında yükseltip, sektördeki lider firmalar arasında yer almak.
- Üretimi planlı ve uygun bir şekilde genişletip, ihracatımızı arttırmak ve bu sayede Türkiye'ye döviz girdisi sağlamak.
- Yaptığımız yatırımlarla yeni istihdam alanları oluşturarak ülke ekonomisine destek olmak.

Company Profile

Meysan is a famous firm who is the best ones in own area. It has been produced door handles, door locks, door lock cylinders, brass and steel hinges for doors and windows, accessory for house and office furniture, since 1977.

At the producing we use 5000 m² closed area, and also our team are professional who use technologic machines and methods although we use products the same as standart, we can use special customers specifications and wishes. The products have got colour and alternatives which they used own area, also they have been produced professionally which they never lose their appearance and functions for long years, and the ranke of producing espically at the last controls, the modern test machines have been used for safety them.

MEYSAN is going to mount of standarts in Turkey like producing, distributing, service of after sale and general directions.

Our mission

- To present products trusty and quality.
- To develop new products wich use technologic AR-GE affects.
- To work with a team who they are young and professional.

Our vision

- To mount product's quality by technologic development.
- To be among the leading companies in the sector with our quality.
- To develop producing perfect, to mount exportations, provide foreign currency inflow to Turkey.
- With our investments, can able to support economy of Turkey.

İÇİNDEKİLER

INDEX

1

BÖLÜM
Zamak Kapı Kolları / Zinc Door Handles

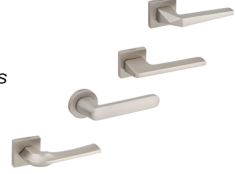
/1-33



2

BÖLÜM
Alüminyum Kapı Kolları / Aluminum Door Handles

/1-24



3

BÖLÜM
Kilitler & Silindirler / Locks & Cylinders

/1-12



4

BÖLÜM
Menteşeler / Hinges

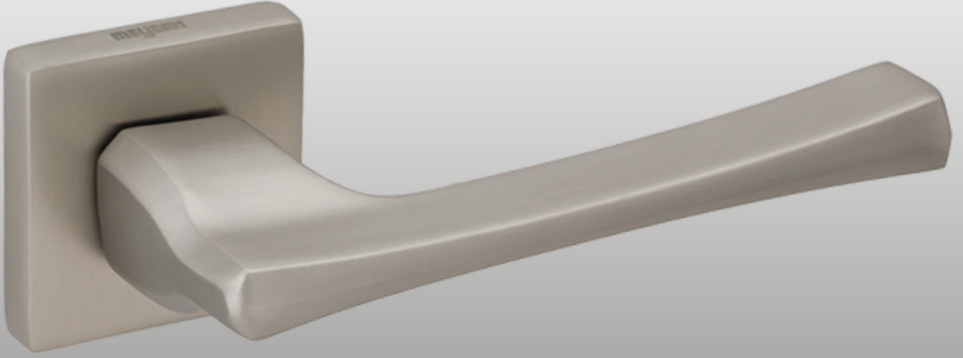
/1-4



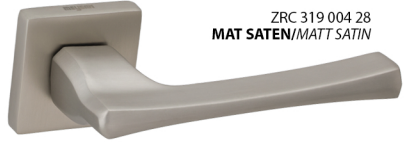
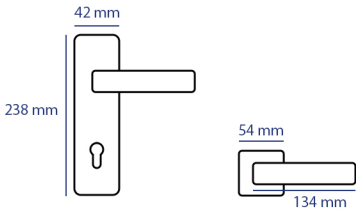
Zamak Kapi Kollari

Zinc Door Handles





ZPC 319 008 02
ALB. SATEN/ALB. SATIN



ZRC 319 004 28
MAT SATEN/MATT SATIN



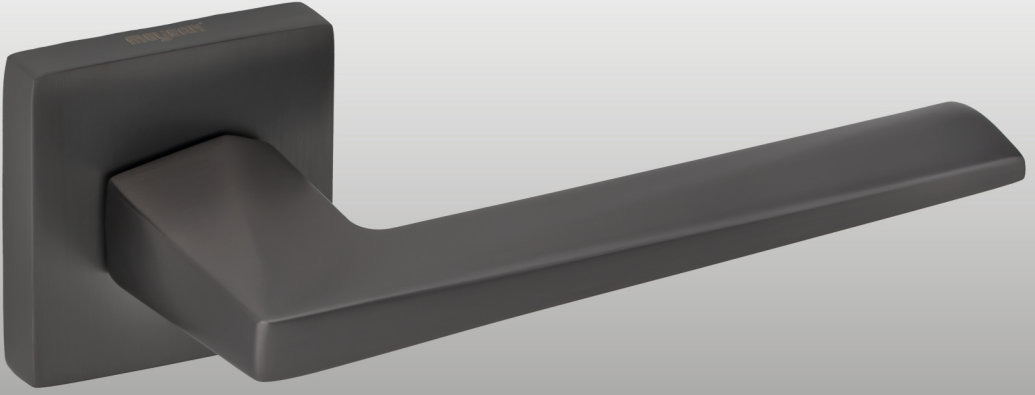
ZRC 303 004 29
ANTRASIT/ANTRASIT



ZRC 303 004 23
MAT SIYAH/MATT BLACK



ZRC 303 004 30
MAT ANTİK/MATT ANTIQUE



ZPC 324 008 02
ALB. SATEN/ALB. SATIN



ZRC 324 004 28
MAT SATEN/MATT SATIN



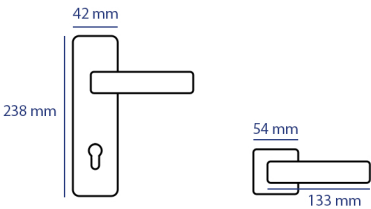
ZRC 324 004 29
ANTRASİT/ANTRASIT

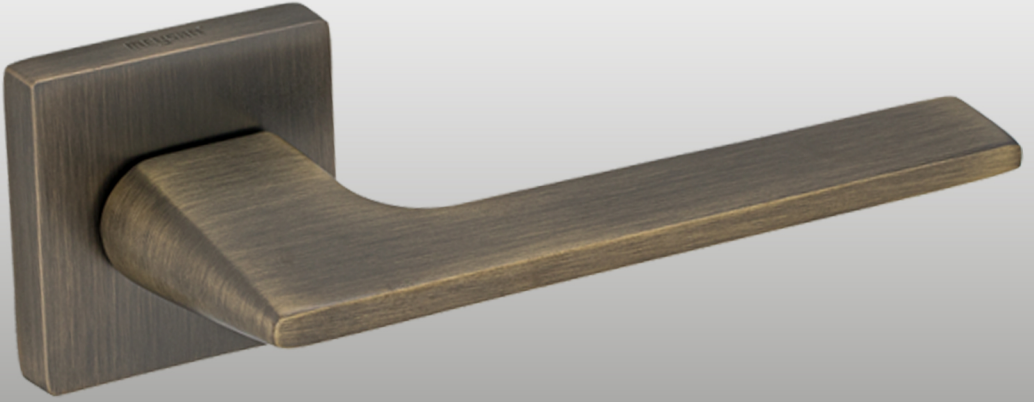


ZRC 324 004 23
MAT SIYAH/MATT BLACK

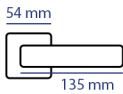
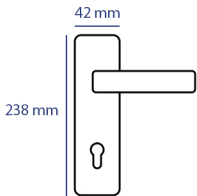


ZRC 324 004 30
MAT ANTİK/MATT ANTIQUE

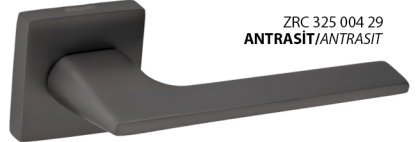




ZPC 325 008 02
ALB. SATEN/ALB. SATIN



ZRC 325 004 28
MAT SATEN/MATT SATIN



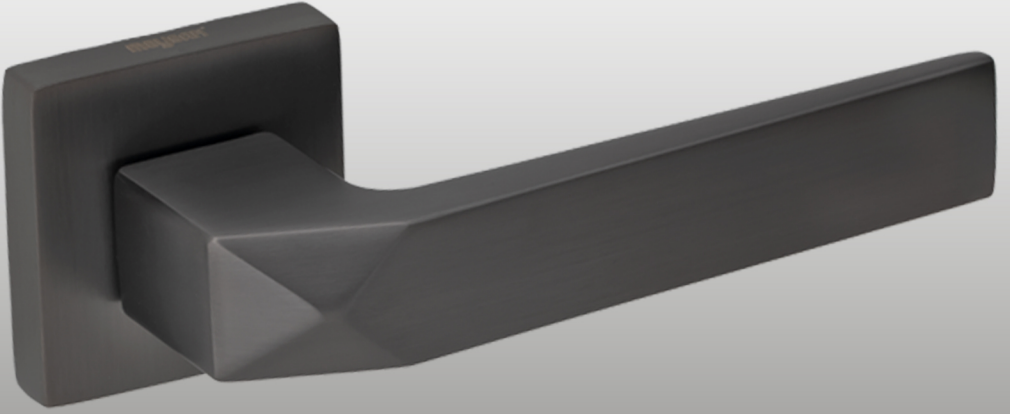
ZRC 325 004 29
ANTRASİT/ANTRASIT



ZRC 325 004 29
ANTRASİT/ANTRASIT



ZRC 325 004 30
MAT ANTIK/MATT ANTIQUE



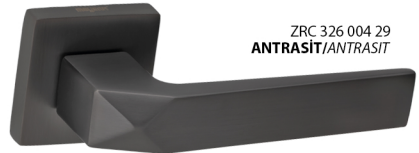
ZPC 326 008 02
ALB. SATEN/ALB. SATIN



ZRC 326 004 28
MAT SATEN/MATT SATIN



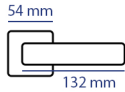
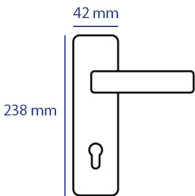
ZRC 326 004 23
MAT SİYAH/MATT BLACK

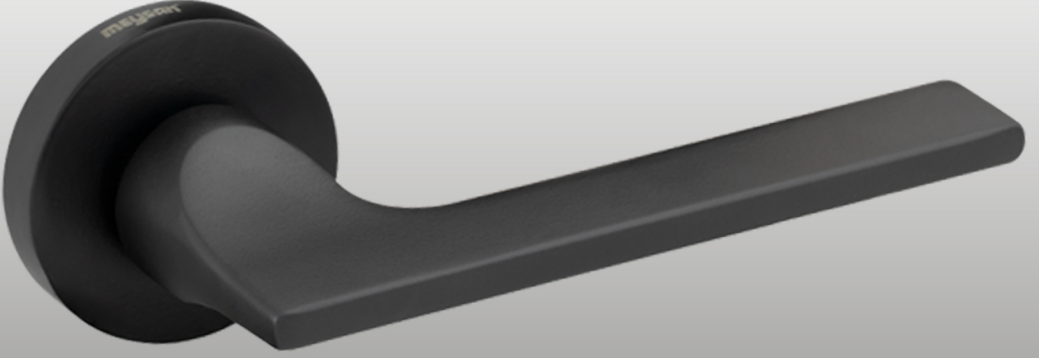


ZRC 326 004 29
ANTRASİT/ANTRASIT

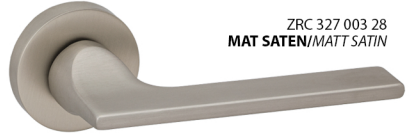
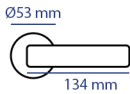
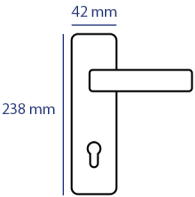


ZRC 326 004 30
MAT ANTİK/MATT ANTIQUE

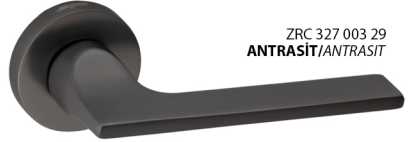




ZPC 327 008 02
ALB. SATEN/ALB. SATIN



ZRC 327 003 28
MAT SATEN/MATT SATIN



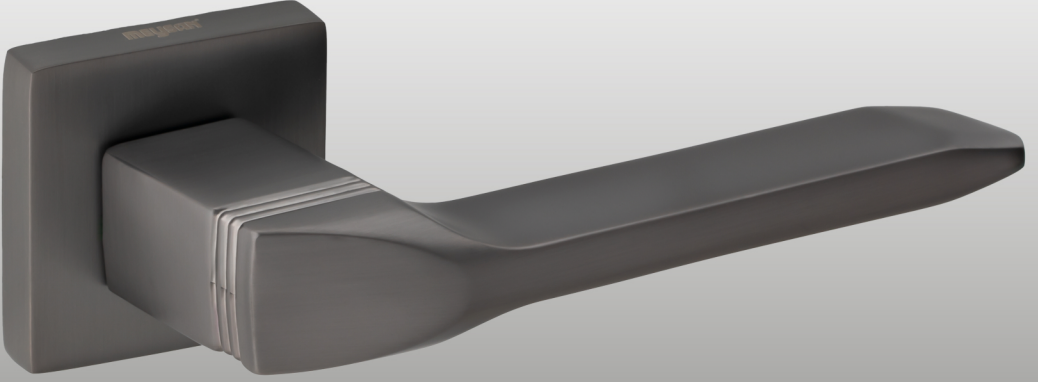
ZRC 327 003 29
ANTRASİT/ANTRASIT



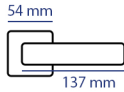
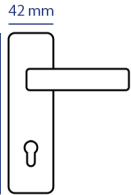
ZRC 327 003 23
MAT SİYAH/MATT BLACK



ZRC 327 003 30
MAT ANTİK/MATT ANTIQUE



ZPC 318 008 02
ALB. SATEN/ALB. SATIN



ZRC 318 004 28
MAT SATEN/MATT SATIN



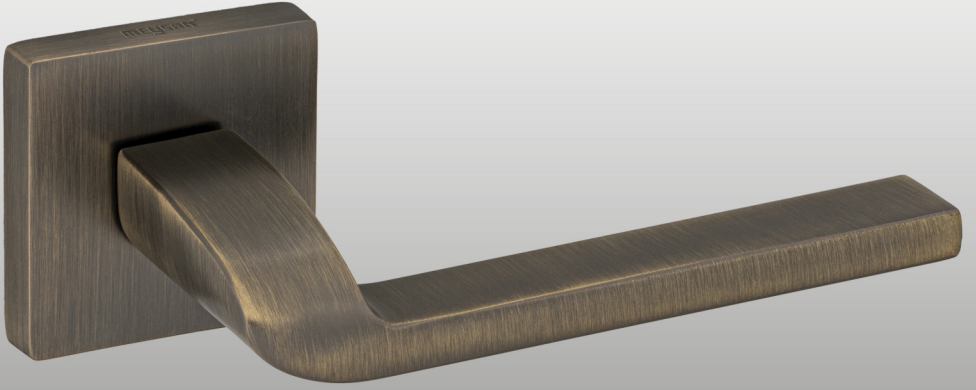
ZRC 318 004 29
ANTRASİT/ANTRASIT



ZRC 318 004 23
MAT SİYAH/MATT BLACK



ZRC 318 004 30
MAT ANTİK/MATT ANTIQUE



ZPC 151 008 02
ALB. SATEN/ALB. SATIN



ZRC 151 004 28
MAT SATEN/MATT SATIN



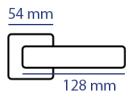
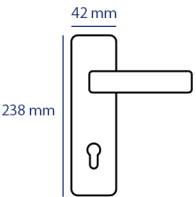
ZRC 151 004 29
ANTRASİT/ANTRASIT

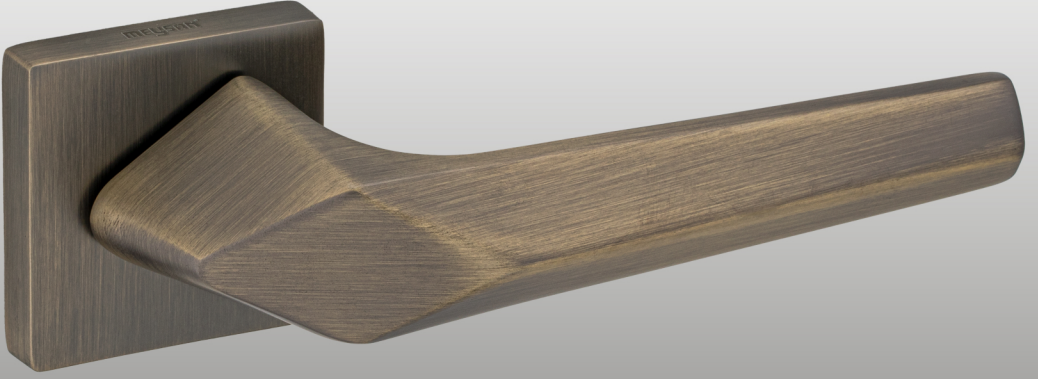


ZRC 151 004 23
MAT SIYAH/MATT BLACK



ZRC 151 004 30
MAT ANTİK/MATT ANTIQUE

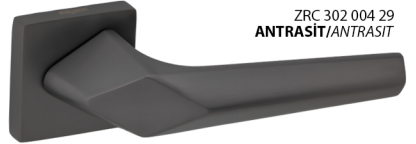




ZPC 302 008 02
ALB. SATEN/ALB. SATIN



ZRC 302 004 28
MAT SATEN/MATT SATIN



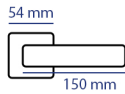
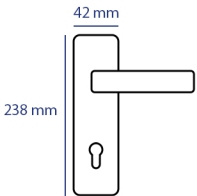
ZRC 302 004 29
ANTRASIT/ANTRASIT



ZRC 302 004 23
MAT SIYAH/MATT BLACK

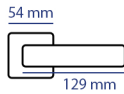
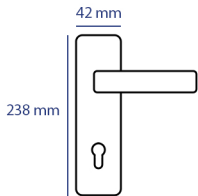


ZRC 302 004 30
MAT ANTİK/MATT ANTIQUE





ZPC 155 008 02
ALB. SATEN/ALB. SATIN



ZRC 155 004 05
NİKEL SATEN/NICKEL SATIN



ZRC 155 004 30
MAT ANTİK/MATT ANTIQUE



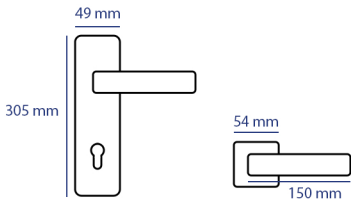
ZRC 155 004 29
ANTRASİT/ANTRASIT



ZRC 155 004 23
MAT SİYAH/MATT BLACK



ZPC 316 013 03
ALB. MAT ALB./ALB. MATT ALB



ZRC 316 004 28
MAT SATEN/MATT SATIN



ZRC 316 004 23
MAT SIYAH/MATT BLACK



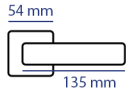
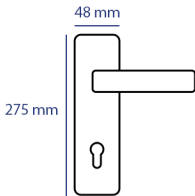
ZRC 316 004 29
ANTRASİT/ANTRASIT



ZRC 316 004 30
MAT ANTİK/MATT ANTIQUE



ZPC 320 003 02
ALB. SATEN/ALB. SATIN



ZRC 320 004 28
MAT SATEN/MATT SATIN



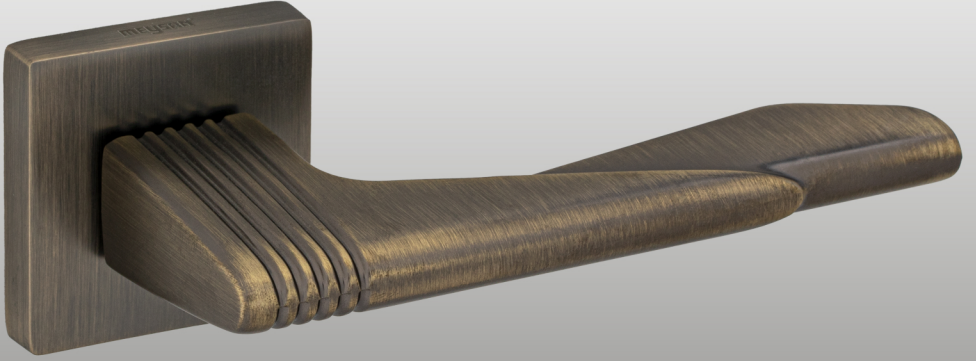
ZRC 320 004 23
MAT SIYAH/MATT BLACK



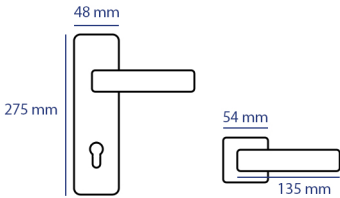
ZRC 320 004 29
ANTRASİT/ANTRASIT



ZRC 320 004 30
MAT ANTİK/MATT ANTIQUE



ZPC 317 003 02
ALB. SATEN/ALB. SATIN



ZRC 317 004 28
MAT SATEN/MATT SATIN



ZRC 317 004 23
MAT SIYAH/MATT BLACK



ZRC 317 004 29
ANTRASİT/ANTRASIT



ZRC 317 004 30
MAT ANTİK/MATT ANTIQUE



ZPC 323 003 02
ALB. SATEN/ALB. SATIN



ZRC 323 004 28
MAT SATEN/MATT SATIN



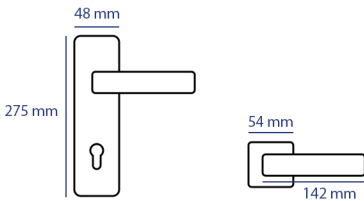
ZRC 323 004 23
MAT SIYAH/MATT BLACK



ZRC 323 004 29
ANTRASİT/ANTRASIT

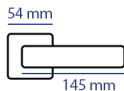
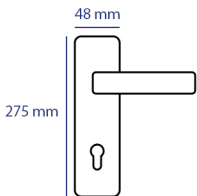


ZRC 323 004 30
MAT ANTİK/MATT ANTIQUE





ZPC 312 003 03
ALB. MAT ALB./ALB. MATT ALB



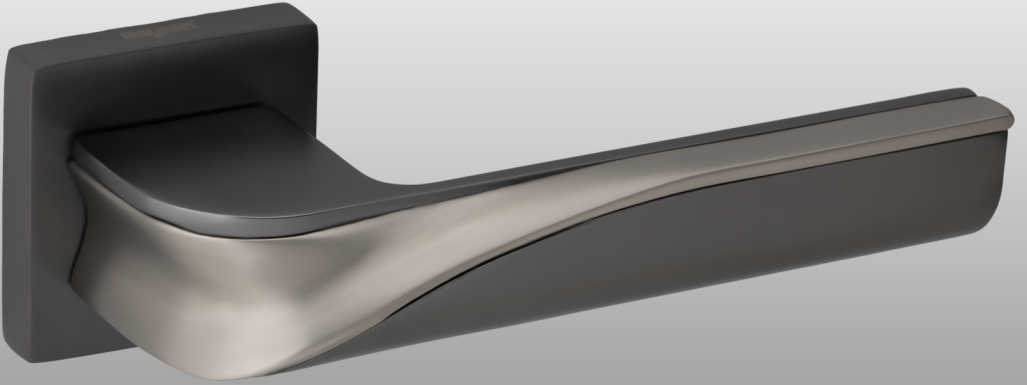
ZRC 312 004 29
ANTRASİT / ANTRASİT



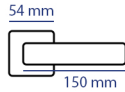
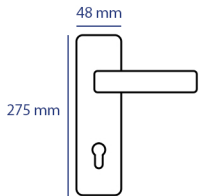
ZRC 312 004 23
MAT SIYAH / MATT BLACK



ZRC 312 004 05
NİKEL SATEN / NICKEL SATIN



ZPC 314 003 03
ALB. MAT ALB/ALB. MATT ALB



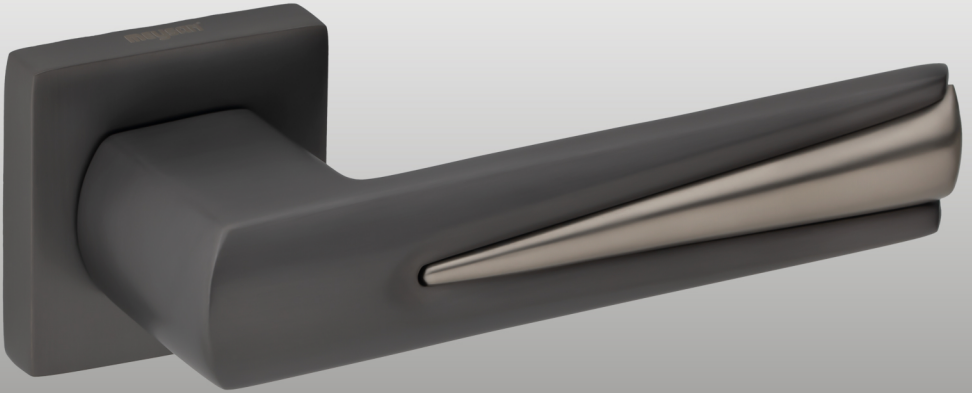
ZRC 314 004 05
NİKEL SATEN /NICKEL SATIN



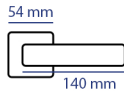
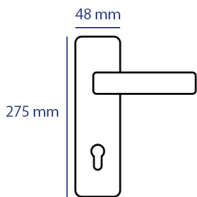
ZRC 314 004 29
ANTRASIT/ANTRASIT



ZRC 314 004 24
SİYAH SATEN/BLACK SATIN



ZPC 313 003 03
ALB. MAT ALB./ALB. MATT ALB



ZRC 313 004 05
NİKEL SATEN /NICKEL SATIN



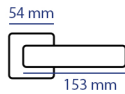
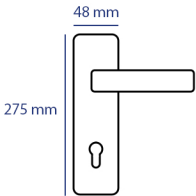
ZRC 313 004 29
ANTRASIT/ANTRASIT



ZRC 313 004 24
SİYAH SATEN/BLACK SATIN



ZPC 315 003 03
ALB. MAT ALB./ALB. MATT ALB



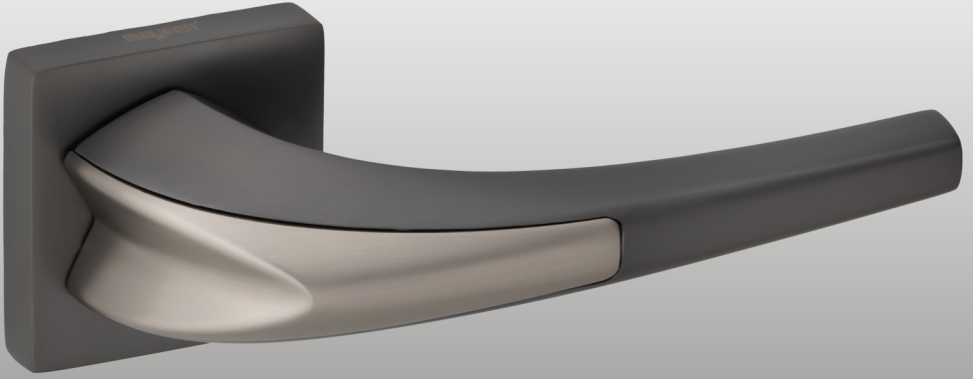
ZRC 315 004 24
SİYAH-SATEN /BLACK-SATIN



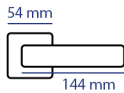
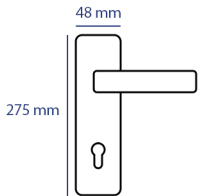
ZRC 315 004 29
ANTRASİT/ANTRASİT



ZRC 315 004 05
NİKEL SATEN/NICKEL SATIN



ZPC 309 003 03
ALB. MAT ALB./ALB. MATT ALB



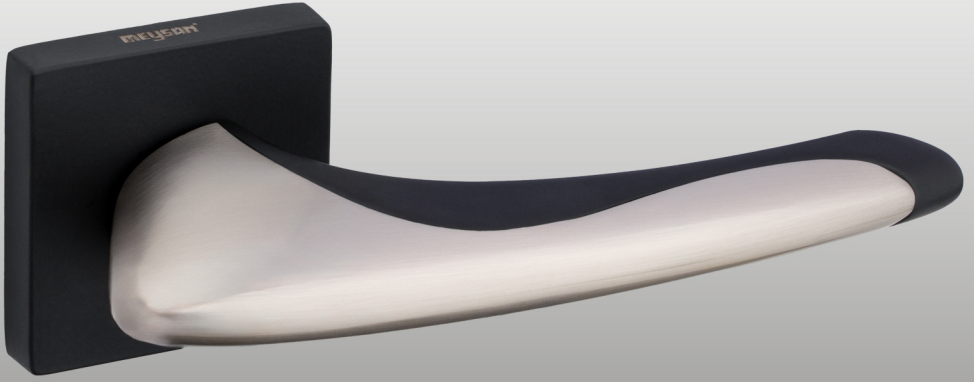
ZRC 309 004 05
NİKEL SATEN /NICKEL SATIN



ZRC 309 004 29
ANTRASIT/ANTRASIT



ZRC 309 004 24
SİYAH SATEN/BLACK SATIN



ZPC 310 003 03
ALB. MAT ALB./ALB. MATT ALB



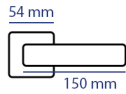
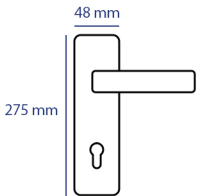
ZRC 310 004 05
NİKEL SATEN /NICKEL SATIN

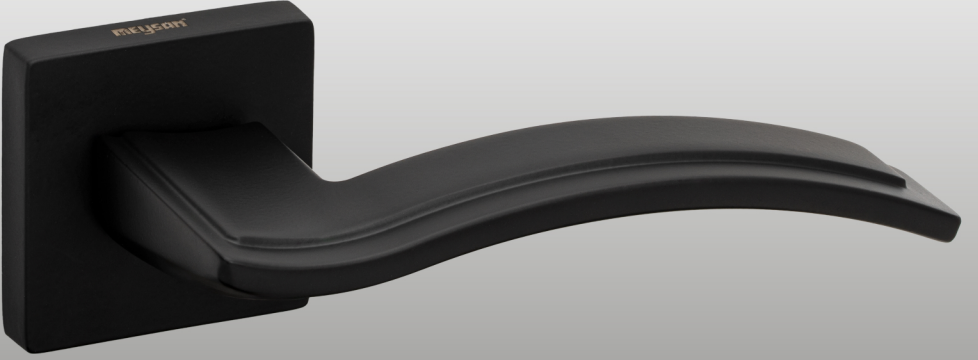


ZRC 310 004 29
ANTRASİT/ANTRASİT



ZRC 310 004 24
SİYAH SATEN/BLACK SATIN





ZPC 304 009 02
ALB. SATEN / ALB. SATIN



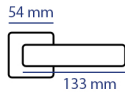
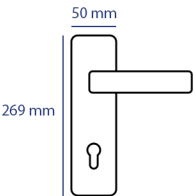
ZRC 304 004 05
NİKEL SATEN / NICKEL SATIN



ZRC 304 004 29
ANTRASİT / ANTRASIT



ZRC 304 004 23
MAT SİYAH / MATT BLACK





ZPC 303 009 02
ALB. SATEN/ALB. SATIN



ZRC 303 004 05
NİKEL SATEN/NICKEL SATIN



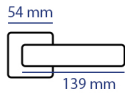
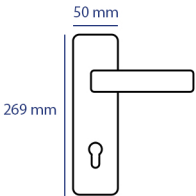
ZRC 303 004 23
MAT SIYAH/MATT BLACK

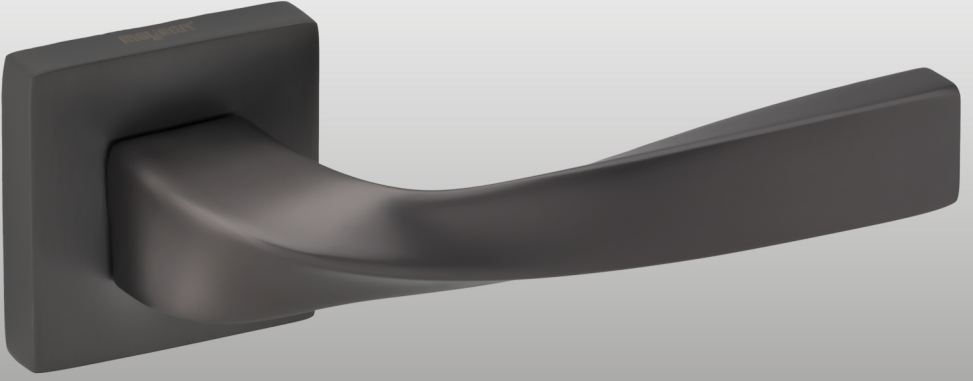


ZRC 303 004 29
ANTRASİT/ANTRASIT



ZRC 303 004 30
MAT ANTİK/MATT ANTIQUE





ZPC 158 008 02
ALB. SATEN/ALB. SATIN



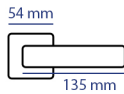
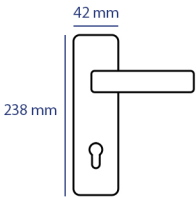
ZRC 158 004 05
NİKEL SATEN/NICKEL SATIN

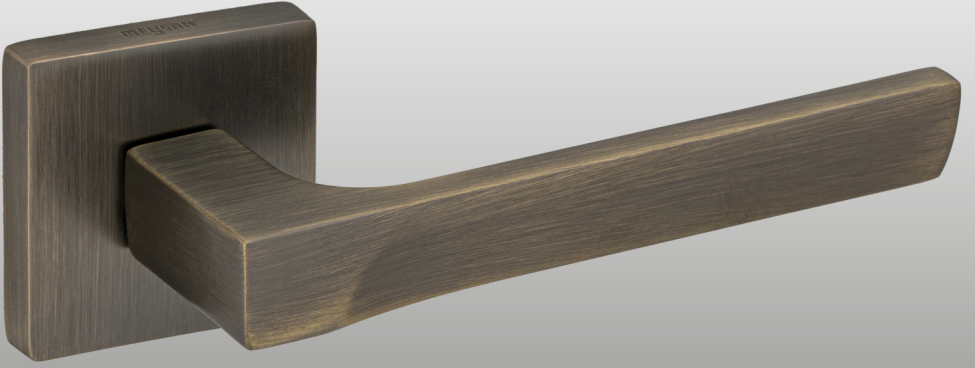


ZRC 158 004 29
ANTRASİT/ANTRASIT



ZRC 158 004 23
MAT SİYAH/MATT BLACK





ZPC 300 008 02
ALB. SATEN/ALB. SATIN



ZRC 300 004 28
MAT SATEN /MATT SATIN



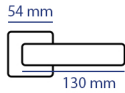
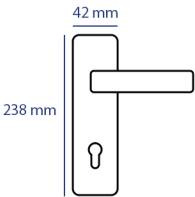
ZRC 300 004 29
MAT ANTRASIT/ANTRASIT

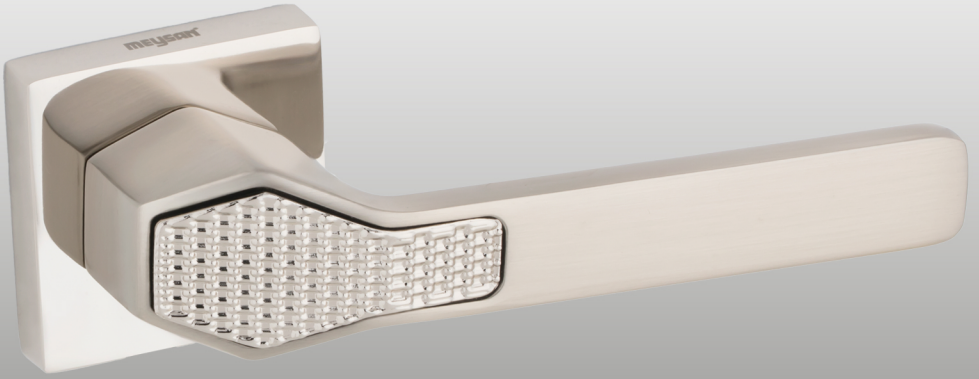


ZRC 300 004 23
MAT SIYAH/MATT BLACK

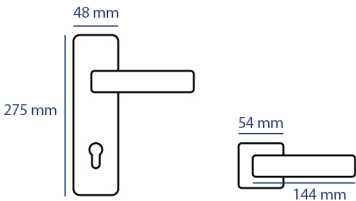


ZRC 300 004 30
MAT ANTİK/MATT ANTIQUE





ZPC 311 003 03
ALB. MAT ALB./ALB. MATT ALB



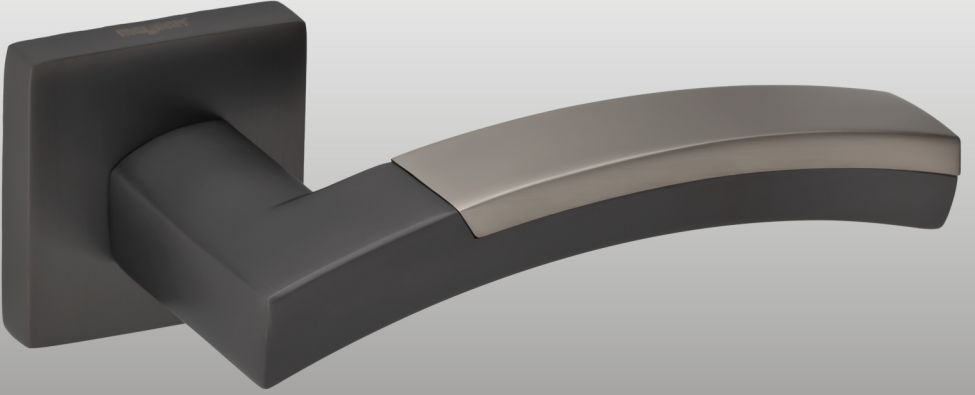
ZRC 311 004 05
NİKEL SATEN /NICKEL SATIN



ZRC 311 004 29
ANTRASİT/ANTRASIT



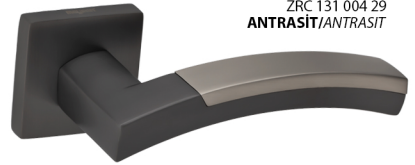
ZRC 311 004 24
SİYAH SATEN/BLACK SATIN



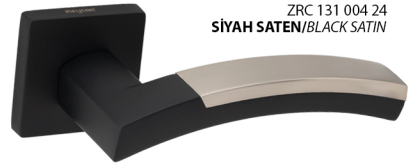
ZPC 131 003 03
ALB. MAT ALB./ALB. MATT ALB



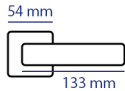
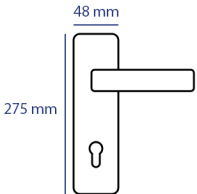
ZRC 131 004 05
NİKEL SATEN /NICKEL SATIN

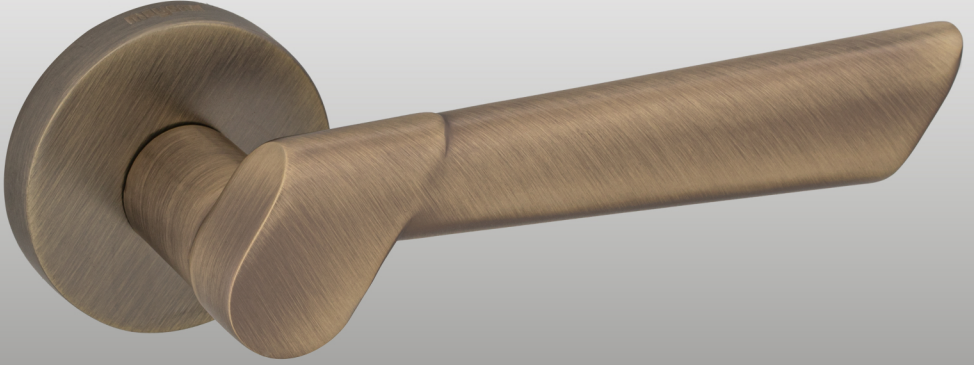


ZRC 131 004 29
ANTRASİT/ANTRASIT



ZRC 131 004 24
SİYAH SATEN/BLACK SATIN

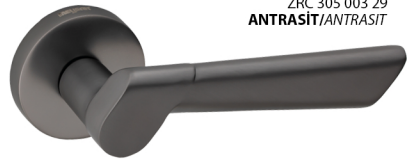




ZPC 305 008 02
ALB. SATEN / ALB. SATIN



ZRC 305 003 05
NİKEL SATEN / NICKEL SATIN



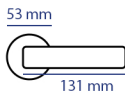
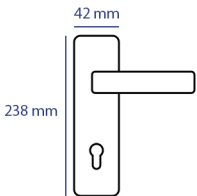
ZRC 305 003 29
ANTRASİT / ANTRASIT

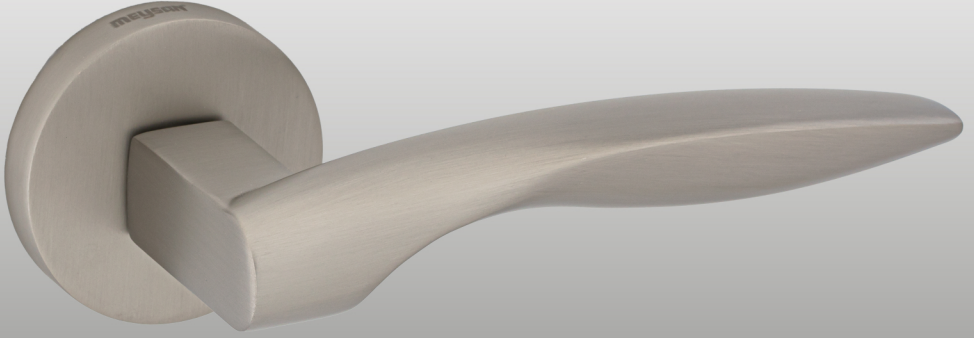


ZRC 305 003 23
MAT SİYAH / MATT BLACK



ZRC 305 003 30
MAT ANTİK / MATT ANTIQUE

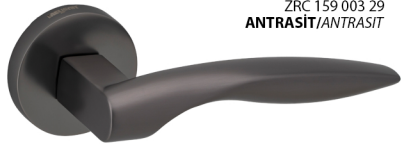




ZPC 159 008 02
ALB. SATEN/ALB. SATIN



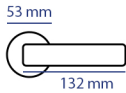
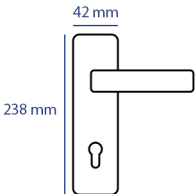
ZRC 159 003 28
MAT SATEN /MATT SATIN



ZRC 159 003 29
ANTRASIT/ANTRASIT



ZRC 159 003 23
MAT SIYAH/MATT BLACK





ZPC 307 010 01
ALBIFIRIN/ALBIFIRIN



ZRC 307 006 19
BEYAZ ALTIN /WHITE GOLD



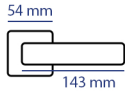
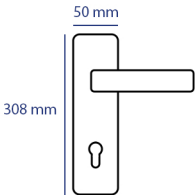
ZRC 307 006 28
MAT SATEN /MATT SATIN



ZRC 307 006 30
MAT ANTIK/MATT ANTIQUE

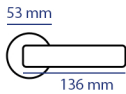
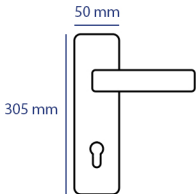


ZRC 307 006 23
MAT SIYAH/MATT BLACK





ZPC 306 011 02
ALBIFIRIN/ALBIFIRIN



ZPC 307 005 19
BEYAZ ALTIN /WHITE GOLD



ZPC 307 005 28
MAT SATEN /MATT SATIN



ZPC 307 005 30
MAT ANTİK/MATT ANTIQUE



ZPC 307 005 23
MAT SİYAH/MATT BLACK



ZPC 332 013 01
ALBIFIRIN/ALBIFIRIN



ZRC 332 006 19
BEYAZ ALTIN /WHITE GOLD



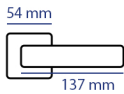
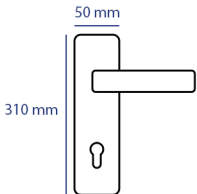
ZRC 332 006 28
MAT SATEN /MATT SATIN



ZRC 332 006 30
MAT ANTIK/MATT ANTIQUE



ZRC 332 006 23
MAT SIYAH/MATT BLACK





ZPC 321 013 01
ALBIFİRİN/ALBIFİRİN



ZRC 321 005 19
BEYAZ ALTIN /WHITE GOLD



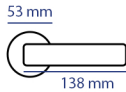
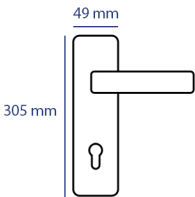
ZRC 321 005 28
MAT SATEN /MATT SATIN

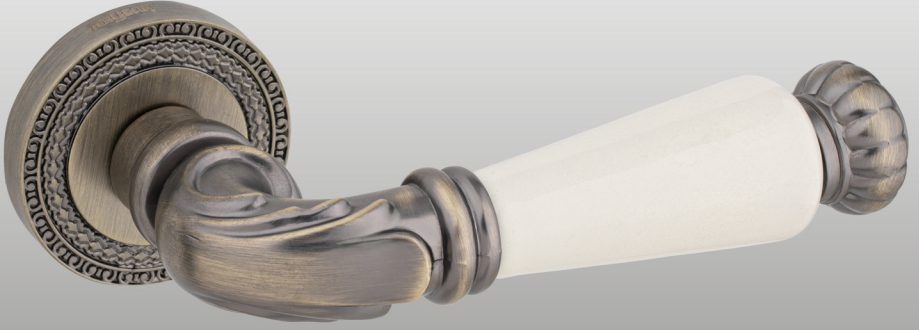


ZRC 321 005 30
MAT ANTIK/MATT ANTIQUE

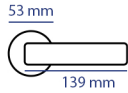
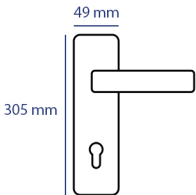


ZRC 321 005 23
MAT SİYAH/MATT BLACK





ZPC 331 013 02
ALB. SATEN/ALB. SATIN



ZRC 331 005 19
BEYAZ ALTIN / WHITE GOLD



ZRC 331 005 28
MAT SATEN / MATT SATIN



ZRC 331 005 30
MAT ANTİK/MATT ANTIQUE



ZRC 331 005 23
MAT SİYAH/MATT BLACK



ZPC 153 005 01
ALBIFIRIN / ALBIFIRIN



ZRC 153 005 19
BEYAZ ALTIN / WHITE GOLD



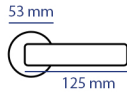
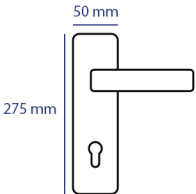
ZRC 153 005 28
MAT SATEN / MATT SATIN



ZRC 153 005 30
MAT ANTİK / MATT ANTIQUE



ZRC 153 005 23
MAT SİYAH / MATT BLACK

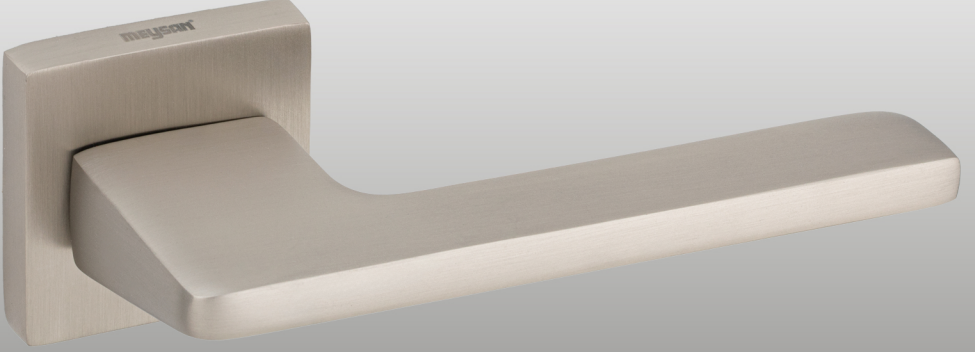


MEYSAN

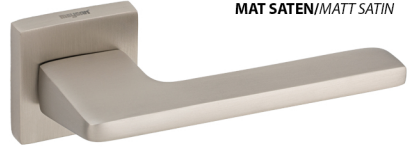
Alüminyum Kapı Kolları

Aluminum Door Handles

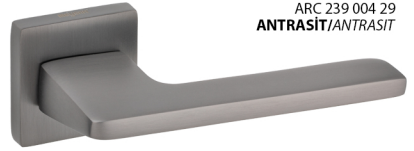




APC 239 008 02
ALB. SATEN/ALB. SATIN



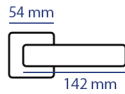
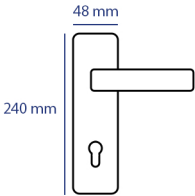
ARC 239 004 28
MAT SATEN/MATT SATIN

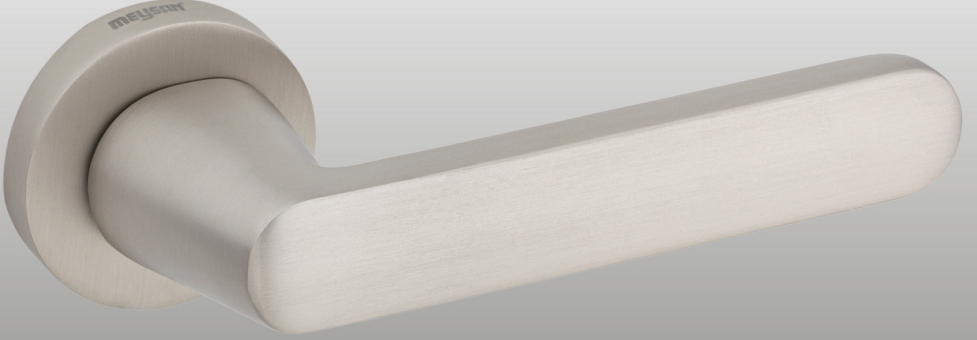


ARC 239 004 29
ANTRASİT/ANTRASIT



ARC 239 004 23
MAT SİYAH/MATT BLACK





ARC 235 008 02
ALB. SATEN / ALB. SATIN



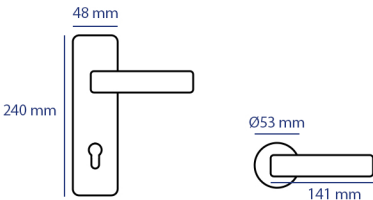
ARC 235 003 28
MAT SATEN / MATT SATIN

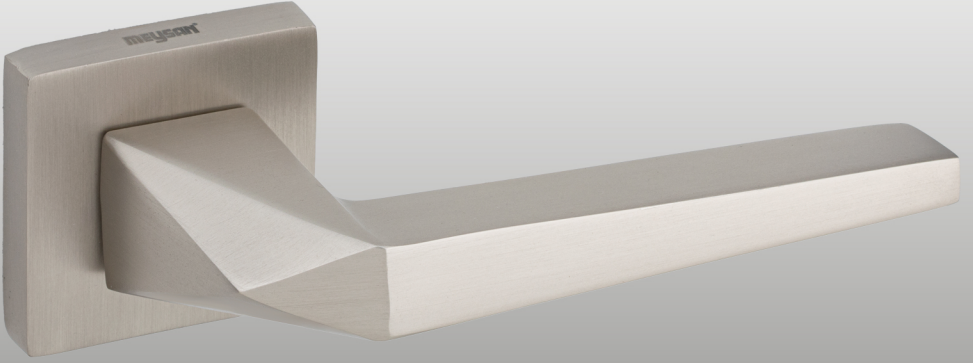


ARC 235 003 29
ANTRASİT / ANTRASIT



ARC 235 003 23
MAT SİYAH / MATT BLACK

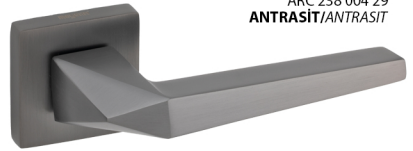




APC 238 008 02
ALB. SATEN/ALB. SATIN



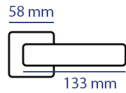
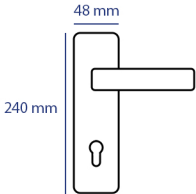
ARC 238 004 28
MAT SATEN/MATT SATIN

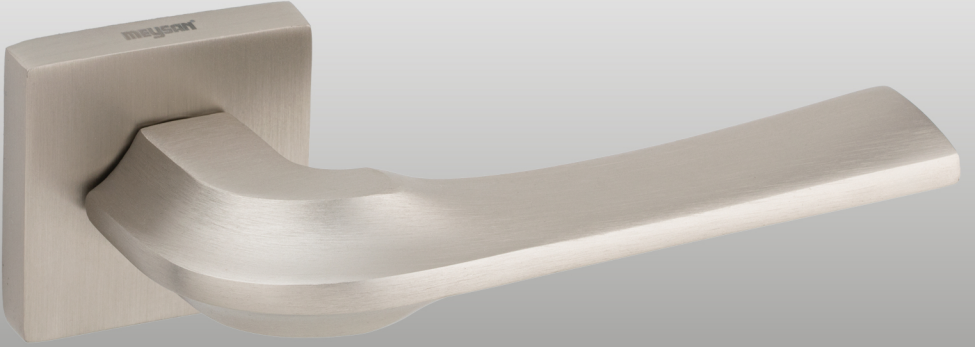


ARC 238 004 29
ANTRASİT/ANTRASİT



ARC 238 004 23
MAT SİYAH/MATT BLACK





APC 236 008 02
ALB. SATEN / ALB. SATIN



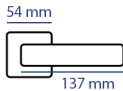
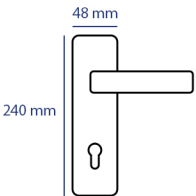
ARC 236 004 28
MAT SATEN / MATT SATIN

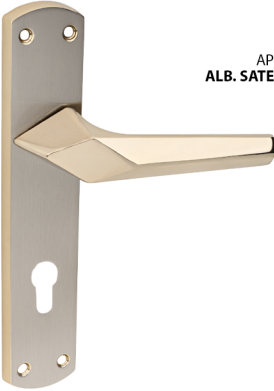
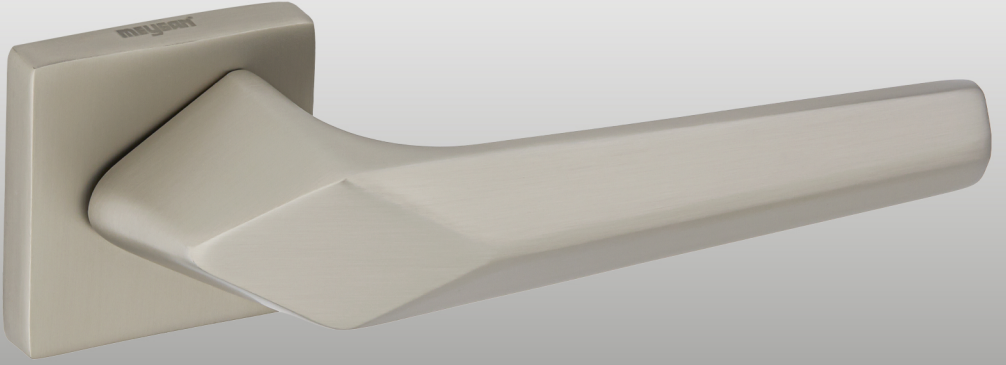


ARC 236 004 29
ANTRASİT / ANTRASIT



ARC 236 004 23
MAT SİYAH / MATT BLACK

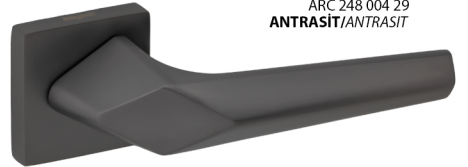




APC 248 008 02
ALB. SATEN/ALB. SATIN



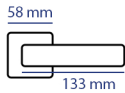
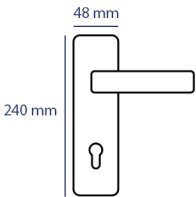
ARC 248 004 28
MAT SATEN/MATT SATIN

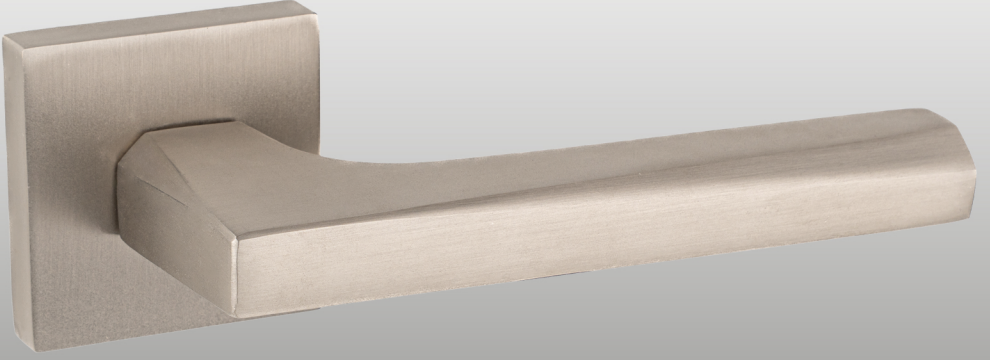


ARC 248 004 29
ANTRASIT/ANTRASIT

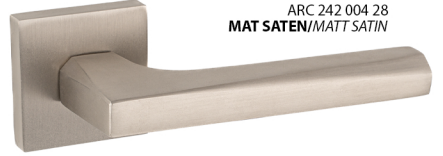


ARC 248 004 23
MAT SİYAH/MATT BLACK





ARC 242 008 02
ALB. SATEN/ALB. SATIN



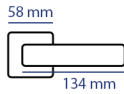
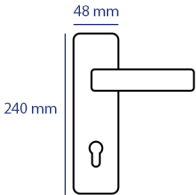
ARC 242 004 28
MAT SATEN/MATT SATIN

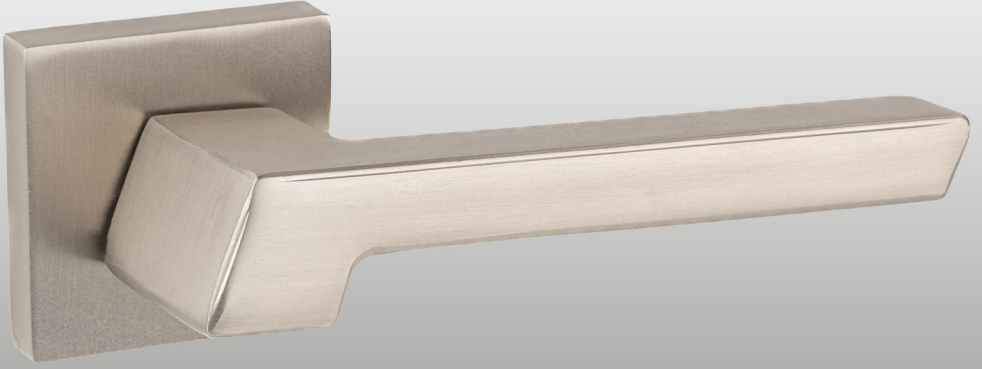


ARC 242 004 29
ANTRASİT/ANTRASIT

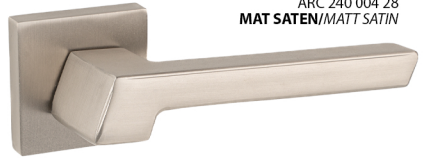


ARC 242 004 23
MAT SİYAH/MATT BLACK





ARC 240 008 02
ALB. SATEN/ALB. SATIN



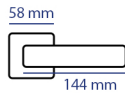
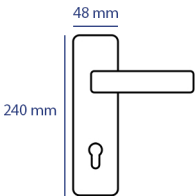
ARC 240 004 28
MAT SATEN/MATT SATIN

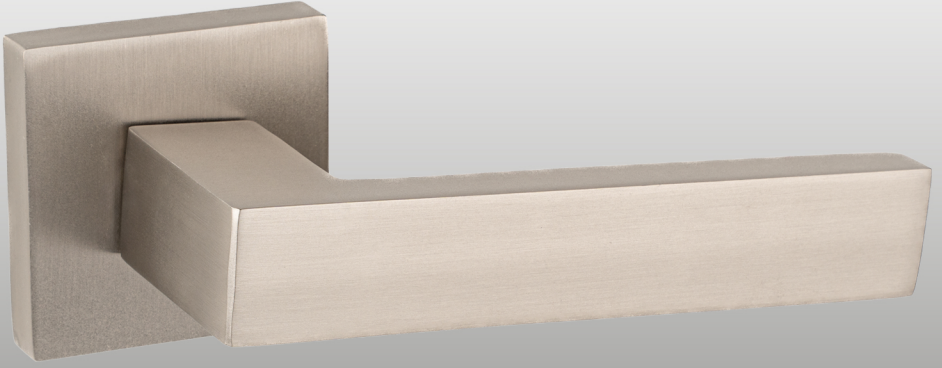


ARC 240 004 29
ANTRASİT/ANTRASIT



ARC 240 004 23
MAT SİYAH/MATT BLACK

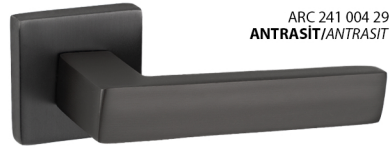




APC 241 008 02
ALB. SATEN/ALB. SATIN



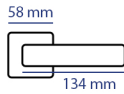
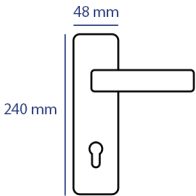
ARC 241 004 28
MAT SATEN/MATT SATIN



ARC 241 004 29
ANTRASİT/ANTRASIT

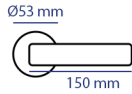
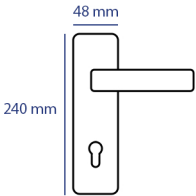


ARC 241 004 23
MAT SİYAH/MATT BLACK





APC 244 008 02
ALB. SATEN/ALB. SATIN



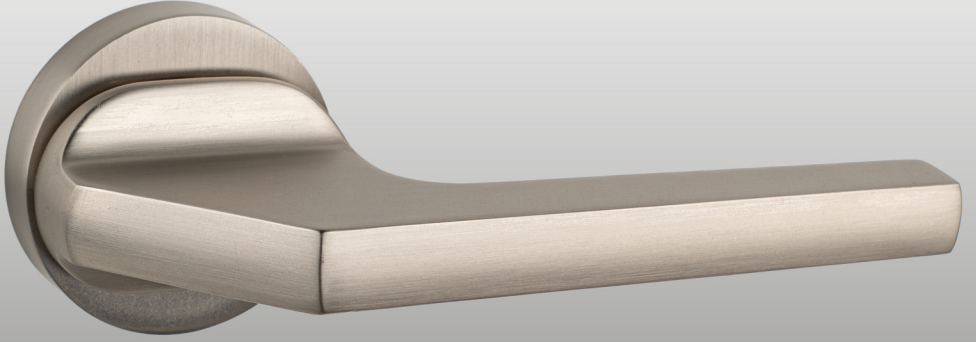
ARC 244 003 28
MAT SATEN/MATT SATIN



ARC 244 003 29
ANTRASİT/ANTRASIT



ARC 244 003 23
MAT SİYAH/MATT BLACK



APC 237 008 02
ALB. SATEN/ALB. SATIN



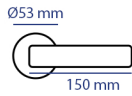
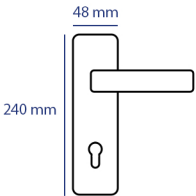
ARC 237 003 28
MAT SATEN/MATT SATIN



ARC 237 003 29
ANTRASİT/ANTRASIT

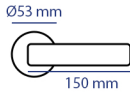
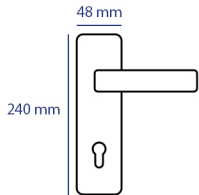


ARC 237 003 23
MAT SİYAH/MATT BLACK





APC 251 008 02
ALB. SATEN/ALB. SATIN



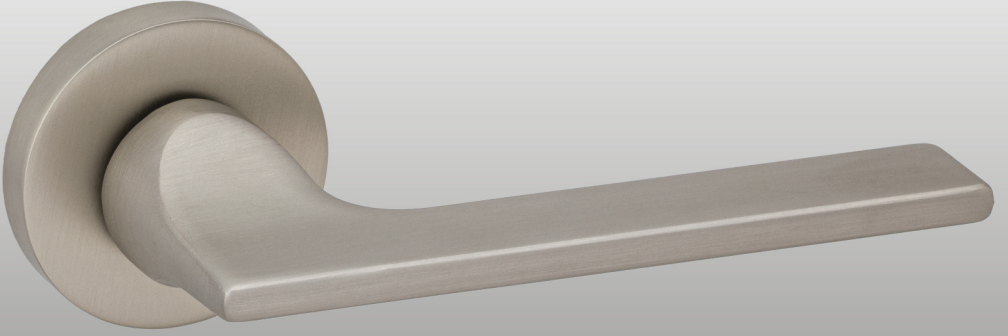
ARC 251 003 28
MAT SATEN/MATT SATIN



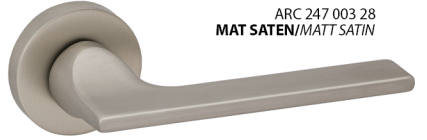
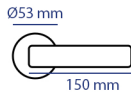
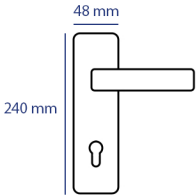
ARC 251 003 29
ANTRASİT/ANTRASIT



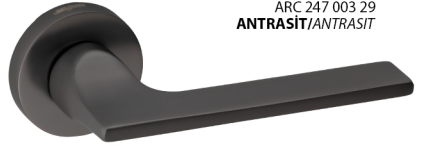
ARC 251 003 23
MAT SİYAH/MATT BLACK



APC.247 008 02
ALB. SATEN/ALB. SATIN



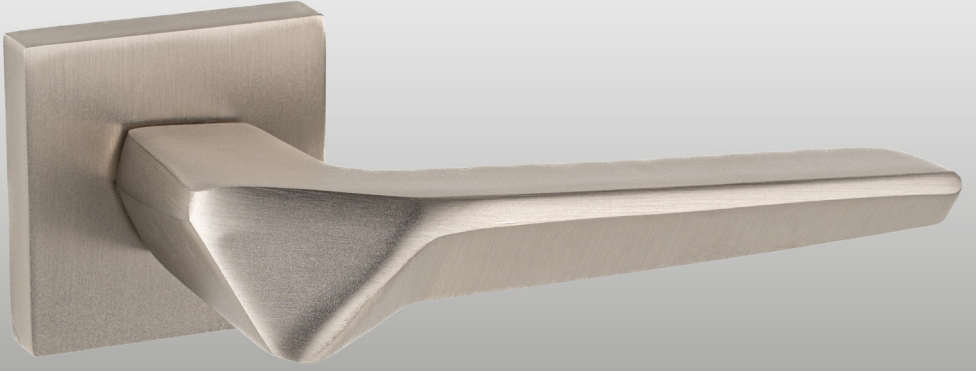
ARC 247 003 28
MAT SATEN/MATT SATIN



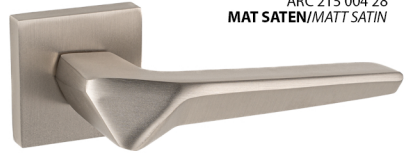
ARC 247 003 29
ANTRASİT/ANTRASIT



ARC 247 003 23
MAT SİYAH/MATT BLACK



ARC 215 008 02
ALB. SATEN/ALB. SATIN



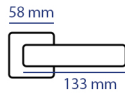
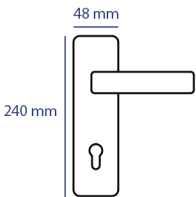
ARC 215 004 28
MAT SATEN/MATT SATIN



ARC 215 004 29
ANTRASİT/ANTRASİT



ARC 215 004 23
MAT SİYAH/MATT BLACK





APC 191 008 02
ALB. SATEN/ALB. SATIN



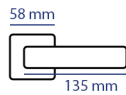
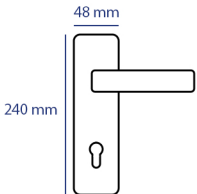
ARC 191 004 28
MAT SATEN/MATT SATIN

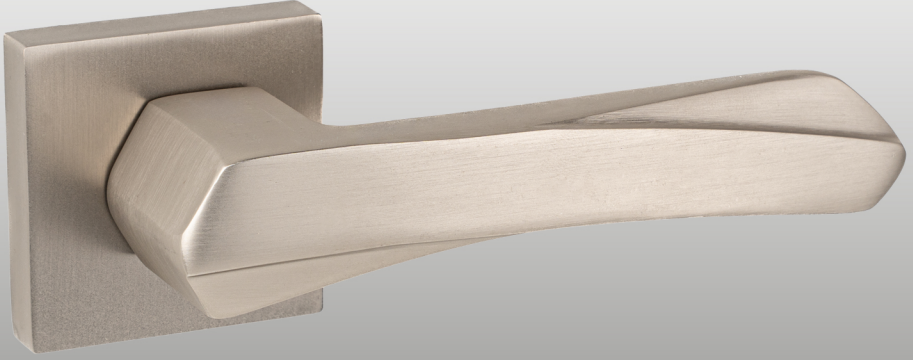


ARC 191 004 29
ANTRASİT/ANTRASİT



ARC 191 004 23
MAT SİYAH/MATT BLACK





APC 201 008 02
ALB. SATEN/ALB. SATIN



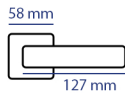
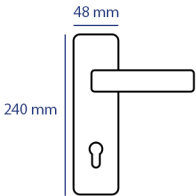
ARC 201 004 28
MAT SATEN/MATT SATIN



ARC 201 004 29
ANTRASİT/ANTRASIT



ARC 201 004 23
MAT SİYAH/MATT BLACK





APC 214 008 02
ALB. SATEN/ALB. SATIN



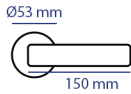
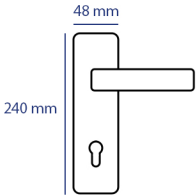
ARC 214 003 28
MAT SATEN/MATT SATIN

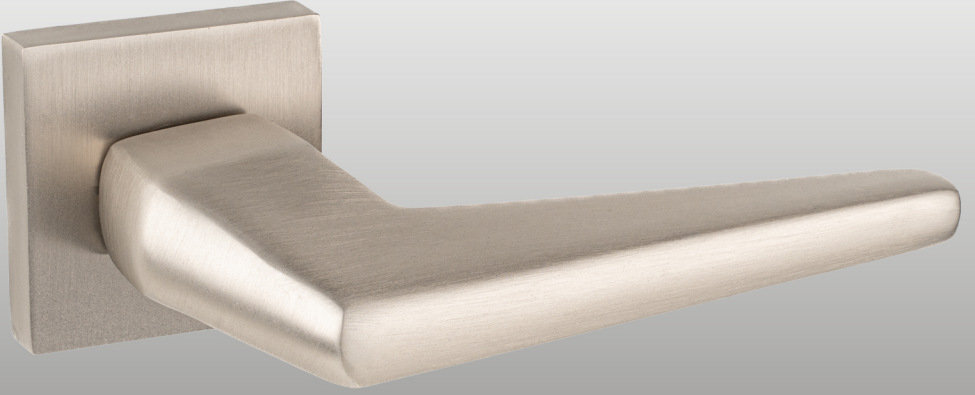


ARC 214 003 29
ANTRASİT/ANTRASIT



ARC 214 003 23
MAT SİYAH/MATT BLACK





APC 216 008 02
ALB. SATEN/ALB. SATIN



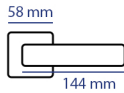
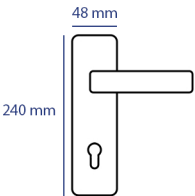
ARC 216 004 28
MAT SATEN/MATT SATIN



ARC 216 004 29
ANTRASİT/ANTRASIT



ARC 216 004 23
MAT SİYAH/MATT BLACK

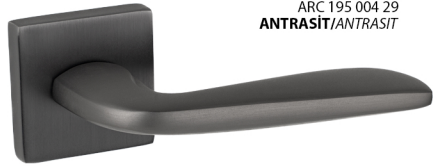




ARC 195 008 02
ALB. SATEN/ALB. SATIN



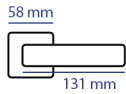
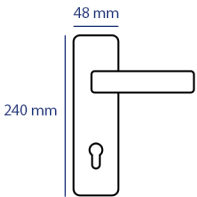
ARC 195 004 28
MAT SATEN/MATT SATIN



ARC 195 004 29
ANTRASİT/ANTRASIT



ARC 195 004 23
MAT SİYAH/MATT BLACK





ARC 196 008 02
ALB. SATEN/ALB. SATIN



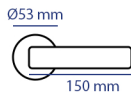
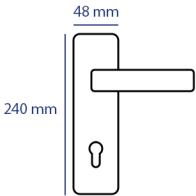
ARC 196 003 28
MAT SATEN/MATT SATIN



ARC 196 003 29
ANTRASİT/ANTRASIT

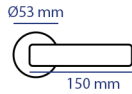
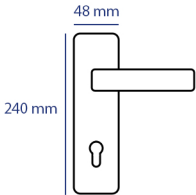


ARC 196 003 23
MAT SİYAH/MATT BLACK





APC 192 008 02
ALB. SATEN/ALB. SATIN



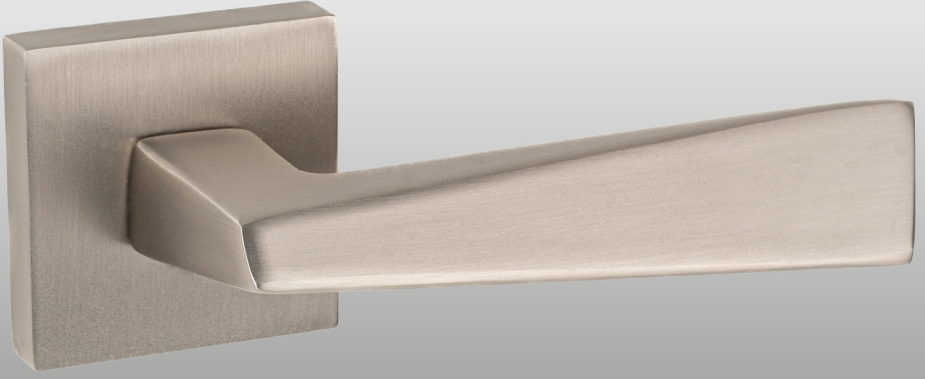
ARC 192 003 28
MAT SATEN/MATT SATIN



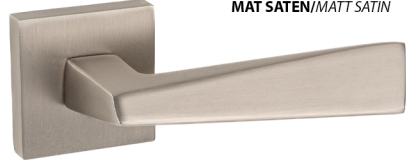
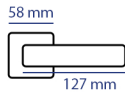
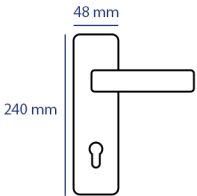
ARC 192 003 29
ANTRASİT/ANTRASIT



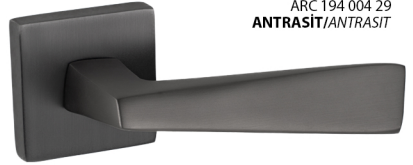
ARC 192 003 23
MAT SİYAH/MATT BLACK



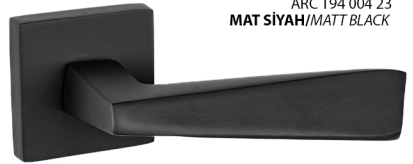
APC 194 008 02
ALB. SATEN/ALB. SATIN



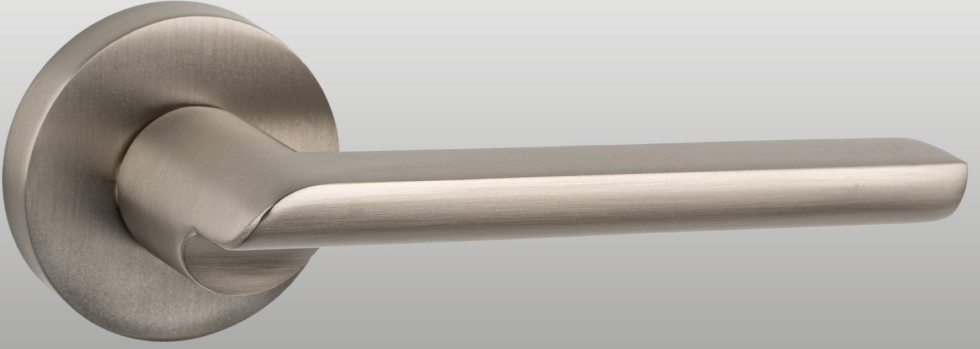
ARC 194 004 28
MAT SATEN/MATT SATIN



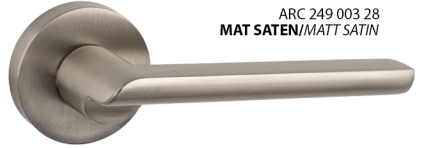
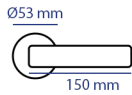
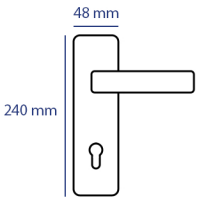
ARC 194 004 29
ANTRASİT/ANTRASIT



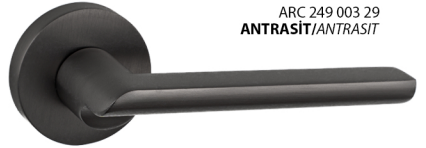
ARC 194 004 23
MAT SİYAH/MATT BLACK



APC 249 008 02
ALB. SATEN/ALB. SATIN



ARC 249 003 28
MAT SATEN/MATT SATIN



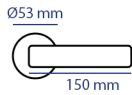
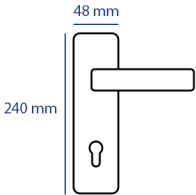
ARC 249 003 29
ANTRASIT/ANTRASIT



ARC 249 003 23
MAT SİYAH/MATT BLACK



ARC 252 008 02
ALB. SATEN/ALB. SATIN



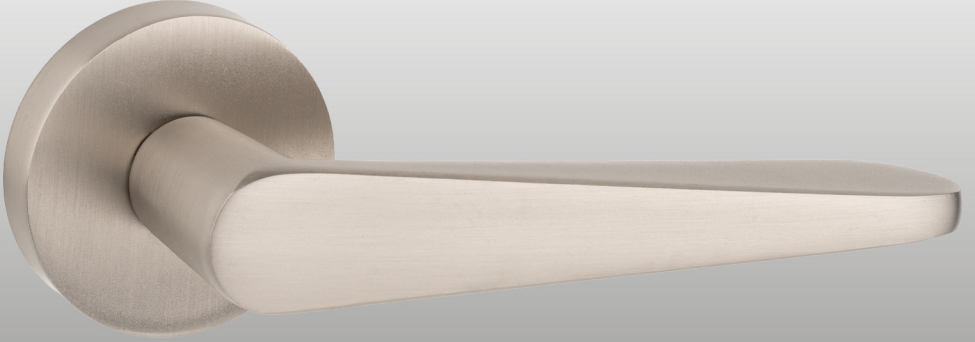
ARC 252 003 28
MAT SATEN/MATT SATIN



ARC 252 003 29
ANTRASİT/ANTRASIT



ARC 252 003 23
MAT SİYAH/MATT BLACK



ARC 221 008 02
ALB. SATEN / ALB. SATIN



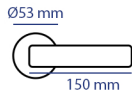
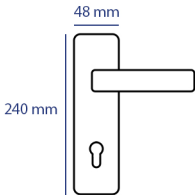
ARC 221 003 28
MAT SATEN / MATT SATIN



ARC 221 003 29
ANTRASİT / ANTRASIT



ARC 221 003 23
MAT SİYAH / MATT BLACK



Kilitler Locks



SESSİZ ODA KİLİT (OVAL)**Teknik Bilgiler:**

- * Gövde: Çelik. Galvaniz kaplamalı
- * Ayna ve Karşılık: Çelik.
- * Yön: Çevrilebilir.
- * Ayna Ölçüleri: 18*240 mm
23*240 mm
- * Gövde Ebatları: 40*90 mm
45*90 mm
- * Kapı kolu rozeti için montaj deliği: Var.

**SILENT ROOM LOCK (OVAL)****Technical Information:**

- * Case: Steel. Galvanized.
- * Forend and Striking Plate: Steel.
- * Direction: Reversible.
- * Plate Size: 18*240 mm
23*240 mm
- * Case Size: 40*90 mm
45*90 mm
- * Fixing holes for the escutcheon: Available.

SESSİZ WC KİLİT (OVAL)**Teknik Bilgiler:**

- * Gövde: Çelik. Galvaniz kaplamalı
- * Ayna ve Karşılık: Çelik.
- * Yön: Çevrilebilir.
- * Ayna Ölçüleri: 18*240 mm
23*240 mm
- * Gövde Ebatları: 40*90 mm
45*90 mm
- * Kapı kolu rozeti için montaj deliği: Var.

**SILENT WC LOCK (OVAL)****Technical Information:**

- * Case: Steel. Galvanized.
- * Forend and Striking Plate: Steel.
- * Direction: Reversible.
- * Plate Size: 18*240 mm
23*240 mm
- * Case Size: 40*90 mm
45*90 mm
- * Fixing holes for the escutcheon: Available.

METAL ODA KİLİT (OVAL)

Teknik Bilgiler:

- * Gövde: Çelik. Galvaniz kaplamalı
- * Ayna ve Karşılık: Çelik.
- * Sürgü: Alüminyum. İki turlu.
- * Mandal: Zamak.
- * Yön: Çevrilebilir.
- * Sertifikalar: TS EN 12209
- * Ayna Ölçüleri: 18*240 mm
23*240 mm
- * Gövde Ebatları: 40*90 mm
45*90 mm
- * Kapı kolu rozeti için montaj deliği: Var.



STEEL ROOM LOCK (OVAL)

Technical Information:

- * Case: Steel. Galvanized.
- * Forend and Striking Plate: Steel.
- * Deadbolt: Aluminum. Two throws.
- * Latch: Zinc.
- * Direction: Reversible.
- * Certifications: TS EN 12209
- * Plate Size: 18*240 mm
23*240 mm
- * Case Size: 40*90 mm
45*90 mm
- * Fixing holes for the escutcheon: Available.

METAL BANYO-WC KİLİT (OVAL)

Teknik Bilgiler:

- * Gövde: Çelik. Galvaniz kaplamalı
- * Ayna ve Karşılık: Çelik.
- * Sürgü: Alüminyum. İki turlu.
- * Mandal: Zamak.
- * Yön: Çevrilebilir.
- * Sertifikalar: TS EN 12209
- * Ayna Ölçüleri: 18*240 mm
23*240 mm
- * Gövde Ebatları: 40*90 mm
45*90 mm
- * Kapı kolu rozeti için montaj deliği: Var.



STEEL BATHROOM-WC LOCK (OVAL)

Technical Information:

- * Case: Steel. Galvanized.
- * Forend and Striking Plate: Steel.
- * Dealdbolt: Aluminum. Two throws.
- * Latch: Zinc.
- * Direction: Reversible.
- * Certifications: TS EN 12209
- * Plate Size: 18*240 mm
23*240 mm
- * Case Size: 40*90 mm
45*90 mm
- * Fixing holes for the escutcheon: Available.

METAL ODA KİLİT

Teknik Bilgiler:

- * Gövde: Çelik. Galvaniz kaplamalı
- * Ayna ve Karşılık: Çelik.
- * Sürgü: Alüminyum. İki turlu.
- * Mandal: Zamak.
- * Yön: Çevrilebilir.
- * Sertifikalar: TS EN 12209
- * Ayna Ölçüleri: 18*240 mm
23*240 mm
- * Gövde Ebatları: 40*90 mm
45*90 mm
- * Kapı kolu rozeti için montaj deliği: Var.



STEEL ROOM LOCK

Technical Information:

- * Case: Steel. Galvanized.
- * Forend and Striking Plate: Steel.
- * Deadbolt: Aluminum. Two throws.
- * Latch: Zinc.
- * Direction: Reversible.
- * Certifications: TS EN 12209
- * Plate Size: 18*240 mm
23*240 mm
- * Case Size: 40*90 mm
45*90 mm
- * Fixing holes for the escutcheon: Available.

METAL BANYO-WC KİLİT

Teknik Bilgiler:

- * Gövde: Çelik. Galvaniz kaplamalı
- * Ayna ve Karşılık: Çelik.
- * Sürgü: Alüminyum. İki turlu.
- * Mandal: Zamak.
- * Yön: Çevrilebilir.
- * Sertifikalar: TS EN 12209
- * Ayna Ölçüleri: 18*240 mm
23*240 mm
- * Gövde Ebatları: 40*90 mm
45*90 mm
- * Kapı kolu rozeti için montaj deliği: Var.



STEEL BATHROOM-WC LOCK

Technical Information:

- * Case: Steel. Galvanized.
- * Forend and Striking Plate: Steel.
- * Deadbolt: Aluminum. Two throws.
- * Latch: Zinc.
- * Direction: Reversible.
- * Certifications: TS EN 12209
- * Plate Size: 18*240 mm
23*240 mm
- * Case Size: 40*90 mm
45*90 mm
- * Fixing holes for the escutcheon: Available.

SİLİNDİRLİ KİLİT (OVAL)

Teknik Bilgiler:

- * Gövde: Çelik. Galvaniz kaplamalı
- * Ayna ve Karşılık: Çelik.
- * Sürgü: Alüminyum. İki turlu.
- * Mandal: Zamak.
- * Yön: Çevrilebilir.
- * Sertifikalar: TS EN 12209
- * Ayna Ölçüleri: 18*240 mm
23*240 mm
- * Gövde Ebatları: 40*85 mm
45*85 mm
- * Kapı kolu rozeti için montaj deliği: Var.



CYLINDER LOCK (OVAL)

Technical Information:

- * Case: Steel. Galvanized.
- * Forend and Striking Plate: Steel.
- * Deadbolt: Aluminum. Two throws.
- * Latch: Zinc.
- * Direction: Reversible.
- * Certifications: TS EN 12209
- * Plate Size: 18*240 mm
23*240 mm
- * Case Size: 40*85 mm
45*85 mm
- * Fixing holes for the escutcheon: Available.

SİLİNDİRLİ KİLİT

Teknik Bilgiler:

- * Gövde: Çelik. Galvaniz kaplamalı
- * Ayna ve Karşılık: Çelik.
- * Sürgü: Alüminyum. İki turlu.
- * Mandal: Zamak.
- * Yön: Çevrilebilir.
- * Sertifikalar: TS EN 12209
- * Ayna Ölçüleri: 18*240 mm
23*240 mm
- * Gövde Ebatları: 40*85 mm
45*85 mm
- * Kapı kolu rozeti için montaj deliği: Var.



CYLINDER LOCK

Technical Information:

- * Case: Steel. Galvanized.
- * Forend and Striking Plate: Steel.
- * Dealdbolt: Aluminum. Two throws.
- * Latch: Zinc.
- * Direction: Reversible.
- * Certifications: TS EN 12209
- * Plate Size: 18*240 mm
23*240 mm
- * Case Size: 40*85 mm
45*85 mm
- * Fixing holes for the escutcheon: Available.

SİLİNDİRLİ KİLİT 3 MİLLİ

Teknik Bilgiler:

- * Gövde: Çelik. Galvaniz kaplamalı
- * Ayna ve Karşılık: Çelik.
- * Sürgü: Çelik. İki turlu.
- * Mandal: Zamak.
- * Yön: Çevrilebilir.
- * Sertifikalar: TS EN 12209
- * Ayna Ölçüsü: 23*240 mm
- * Gövde Ebatları: 45*85 mm
- * Kapı kolu rozeti için montaj deliği: Var.



CYLINDER LOCK 3 DEADBOLT

Technical Information:

- * Case: Steel. Galvanized.
- * Forend and Striking Plate: Steel.
- * Dealdbolt: Steel. Two throws.
- * Latch: Zinc.
- * Direction: Reversible.
- * Certifications: TS EN 12209
- * Plate Size: 23*240 mm
- * Case Size: 45*85 mm
- * Fixing holes for the escutcheon: Available.



STANDART SİLİNDİR (PİRİNÇ)

Teknik Bilgiler:

- * Gövde: MS 58 Pirinç. Parlatılmış.
- * Tüp: MS 58 Pirinç. Parlatılmış.
- * Anahtar: Pirinç. Nikel kaplamalı. Multikanallı. Standart. 3adet.
- * Kam: Özel sinter döküm.
- * Anahtar Kombinasyonu: Bilgisayar teknolojisi.
- * Yaylar: Paslanmaz çelik.
- * Pimler: MS 58 özel çekme pirinç.

Standard Cylinder (BRASS)

Technical Information:

- * Body: MS 58 Brass. Polished.
- * Tube: MS 58 Brass. Polished.
- * Key: Brass. Nickel plated. Multiwave. Standard. 3 pieces.
- * Cam: Sintered steel.
- * Key Combinations: Digital technology.
- * Springs: Stainless steel
- * Pins: MS 58 Brass.



STANDART SİLİNDİR (HİBRİT)

Teknik Bilgiler:

- * Gövde: Zamak.
- * Tüp: MS 58 Pirinç.
- * Anahtar: Pirinç. Nikel kaplamalı. Multikanallı. Standart. 3adet.
- * Kam: Özel sinter döküm.
- * Anahtar Kombinasyonu: Bilgisayar teknolojisi.
- * Yaylar: Paslanmaz çelik.
- * Pimler: MS 58 özel çekme pirinç.

Standard Cylinder (HYBRID)

Technical Information:

- * Body: Zinc.
- * Tube: MS 58 Brass.
- * Key: Brass. Nickel plated. Multiwave. Standard. 3 pieces.
- * Cam: Sintered steel.
- * Key Combinations: Digital technology.
- * Springs: Stainless steel
- * Pins: MS 58 Brass.



STANDART SİLİNDİR (ZAMAK)

Teknik Bilgiler:

- * Gövde: Zamak.
- * Tüp: Zamak.
- * Anahtar: Zamak. Nikel kaplamalı. Multikanallı. Standart. 3adet.
- * Kam: Özel sinter döküm.
- * Anahtar Kombinasyonu: Bilgisayar teknolojisi.
- * Yaylar: Paslanmaz çelik.
- * Pimler: MS 58 özel çekme piriç.

Standard Cylinder (ZINC)

Technical Information:

- * Body: Zinc.
- * Tube: Zinc.
- * Key: Zinc. Nickel plated. Multiwave. Standard. 3 pieces.
- * Cam: Sintered steel.
- * Key Combinations: Digital technology.
- * Springs: Stainless steel
- * Pins: MS 58 Brass.

Menteşeler *Hinges*



Okka Lüks
Okka Lux

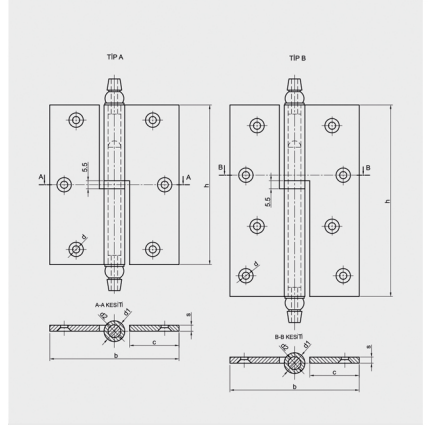


Materyal | **Material**
Pirinç | Brass

Bitiş | **Finishes**
Rulmanlı | Marble
Vernik Kaplı | Varnish

Kod Code	Tip Type	h	b	c	d1	d2	d	S	Ambalaj / Packing		
									Ağırlık/gr Weight/gr	Kutu/ad Box/pcs	Koli / ad Case/pcs
MK 0623 100	A	100	81	32	13	7	4,5	4	320	2	80
MK 0623 120	B	120	81	32	13	7	4,5	4	370	2	80

Ölçüler mm'dir. Sizes/mm



Cumbalı Lüks
Cumbalı Lux

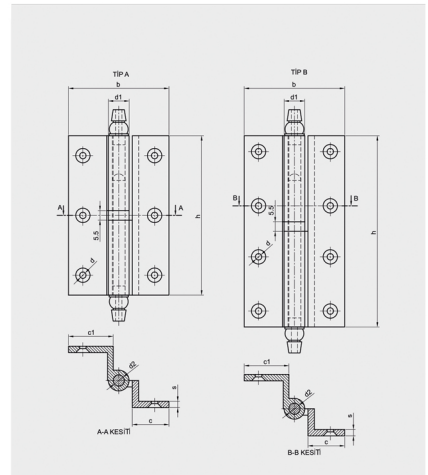


Materyal | **Material**
Pirinç | Brass

Bitiş | **Finishes**
Rulmanlı | Marble
Vernik Kaplı | Varnish

Kod Code	Tip Type	h	b	c	c1	d1	d2	d	S	Ambalaj / Packing		
										Ağırlık/gr Weight/gr	Kutu/ad Box/pcs	Koli / ad Case/pcs
MK 0413 070	A	70	65	23	27	13	7	4,5	4	350	2	60
MK 0413 100	A	100	65	23	27	13	7	4,5	4	400	2	60
MK 0413 120	B	120	65	23	27	13	7	4,5	4	420	2	60

Ölçüler mm'dir. Sizes/mm

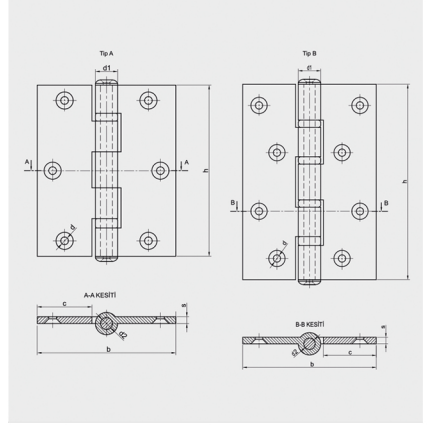


Üniversal Okka
Universal Okka



Materyal | Material
Pirinç | Brass

Bitiş | Finishes
Rulmanlı | Marble
Vernik Kaplı | Varnish



Ambalaj / Packing

Kod Code	Tip Type	h	b	c	d1	d2	d	s	Ağırlık/gr Weight/gr	Kutu/ad Box/pcs	Koli/ad Case/pcs
MK 0816 100	A	100	81	32	13	7	4,5	3	260	15	120
MK 0826 120	B	120	81	32	14	8	4,5	4	310	12	96

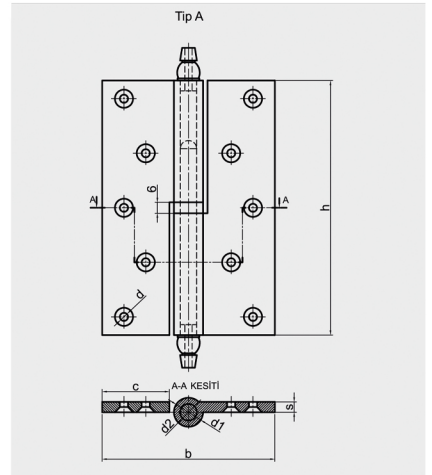
Ölçüler mm'dir. / Sizes/mm

Okka Lüks (Ağır Kapı)
Okka Lux (Heavy Door)



Materyal | Material
Pirinç | Brass

Bitiş | Finishes
Rulmanlı | Marble
Vernik Kaplı | Varnish



Ambalaj / Packing

Kod Code	Tip Type	h	b	c	d1	d2	d	s	Ağırlık/gr Weight/gr	Kutu/ad Box/pcs	Koli / ad Case/pcs
MK 0714 140	A	140	95	37,5	16	9	4,5	5,5	720	12	48

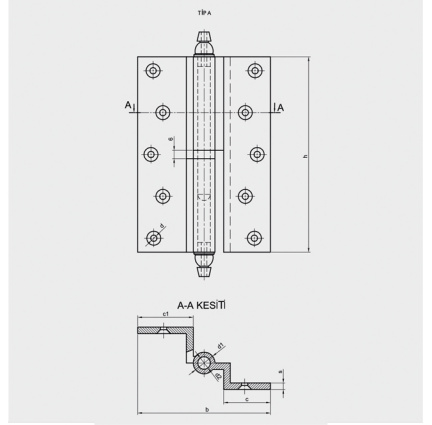
Ölçüler mm'dir. Sizes/mm

Cumbalı lüks (Ağır Kapı)
Cumbali Lux (Heavy Door)



Materyal | Material
Pirinç | Brass

Bitiş | Finishes
Rulmanlı | Marble
Vernik Kapl. | Varnish



Kod Code		Tip Type	h	b	c	c1	d1	d2	d	s	Ağırlık/gr Weight/gr	Kutu/ad Box/pcs	Koli/ad Case/pcs
MK 0524 140		A	140	95	33	38	16	9	4,5	4,7	770	10	40

Ölçüler mm'dir. / Sizes/mm

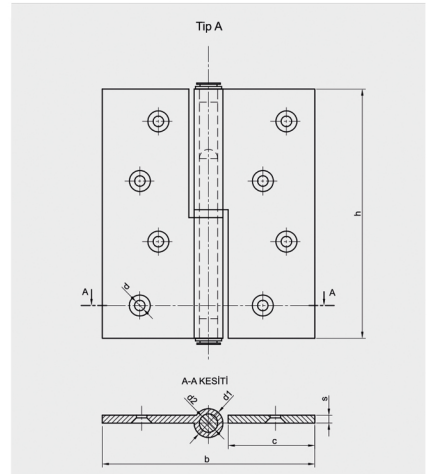
Ambalaj / Packing

Okka Çelik
Okka Steel



Materyal | Material
Çelik | Steel

Bitiş | Finishes
Boyalı | Colored



Kod Code		Tip Type	h	b	c	d1	d2	d	s	Ağırlık/gr Weight/gr	Kutu/ad Box/pcs	Koli / ad Case/pcs
MK 16110 100		A	100	76	30	11,5	6	5,5	2,5	200	20	160

Ölçüler mm'dir. Sizes/mm

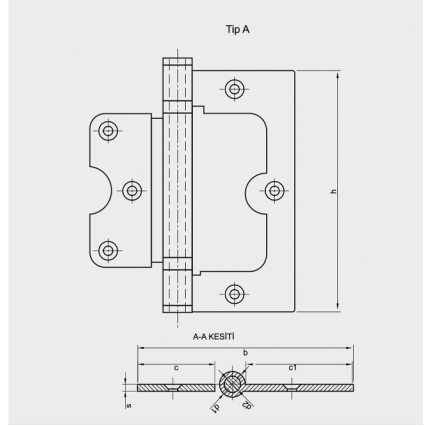
Ambalaj / Packing

Kelebek Çelik
Butterfly Steel



Materyal | **Material**
Çelik | Steel

Bitiş | **Finishes**
Boyalı | Colored



Eko / Eco	Kod Code		Tip Type								Ambalaj / Packing		
	h	b	c	c1	d1	d2	d	s	Ağırlık/gr	Kutu/ad	Koli / ad		
	100	76	25	39	11	7	5,5	2	130	25	200		

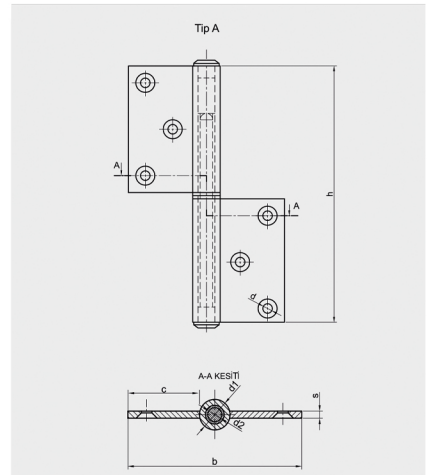
Ölçüler mm'dir. Sizes/mm

German Çelik
German Steel



Materyal | **Material**
Çelik | Steel

Bitiş | **Finishes**
Boyalı | Colored



Eko / Eco	Kod Code		Tip Type								Ambalaj / Packing		
	h	b	c	d1	d2	d	s	Ağırlık/gr	Kutu/ad	Koli / ad			
	100	74	31	11	7	5,5	2	150	25	200			

Ölçüler mm'dir. Sizes/mm

WILEY

Door Handles & Accessories



FABRİKA/MERKEZ

Mecidiye mah. Fatih bul. no:440/1/1
Sultanbeyli/İSTANBUL
Tel: 0216 595 41 84
e-mail: meysan@meysanmentese.com

FABRİKA/MERKEZ

Akşemsettin mah. Çeçe Sultan sk. no:1/A
Sultanbeyli/İSTANBUL
Tel: 0216 487 45 32
e-mail: meysan@meysanmentese.com



High Quality For You